

# Seattle Data Center

SoftLayer Technologies™

Contact Us  
1-866-398-7638  
214-442-0602  
softlayer.com

## What It Is

SoftLayer Seattle is located in a private N+1 data center facility outside the Seattle fault and liquefaction zones. The facility is designed and constructed to sustain a seismic event while maintaining business functions and boasts low latency through superior connections to Seattle's robust fiber optic loops, 55MW of existing electrical capacity, 45 on-site generators with .5-million gallons of on-site fuel storage, and a carrier vault system supported by more than 50 miles of embedded, secure conduits.

### Specifications

- Capacity: more than 10,000 dedicated servers
- 2000 amps 480v input power
- 4 x 500 kVA UPS battery backup units
- Multiple 2 mW diesel generators with on-site fuel storage
- Redundant Liebert 30-ton HVAC units
- Pre-action dry pipe fire suppression
- Biometric security system with proximity badge access
- Digital security video surveillance

SoftLayer data centers are SAS 70 Type II Certified, meeting industry-recognized requirements for security and reliability. The exhaustive, third-party certification assessment included extensive testing of the control objectives and activities at all SoftLayer data center facilities, including oversight by executive management, operations and customer service, development and information technology organization, human resources policies and procedures, and risk assessment monitoring.

Additionally, SoftLayer is self-certified with the U.S. Department of Commerce's U.S.-European Union (EU) Safe Harbor framework, verifying that SoftLayer meets the EU's adequacy standard for data and privacy protection. Self-certification and participation in the Safe Harbor framework is entirely voluntary.

For official documentation or any questions regarding SoftLayer's SAS 70 Type II Certification and Safe Harbor self-certification, please contact sales@softlayer.com.

## Key Advantages

**On-Demand, Virtual Data Center** Through IPMI 2.0 server technologies, secure and remote out-of-band management, and proprietary automated solutions, SoftLayer provides a highly scalable, on-demand, virtual data center experience.

**Geographic Diversity** With fully-featured data centers in Seattle, Dallas, and Washington D.C., SoftLayer provides geographic diversity ideal for maintaining system and data redundancy, as well as for placing systems in the optimal physical location for traffic volume and speeds.

**Redundant, Best-in-Class Infrastructure** All SoftLayer data centers maintain multiple power feeds, fiber links, dedicated generators, and battery backup. They are built from industry-leading hardware and equipment, ensuring the highest level of performance, reliability, and interoperability.

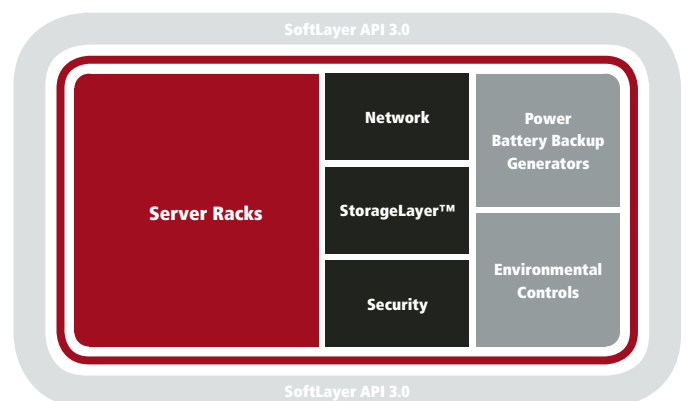
## Data Center Pod Concept

SoftLayer created the unique pod design concept for data center environments. Each data center facility features one or more pods, with each pod built to the same specifications with best-in-class methodologies to support up to 5,000 servers. Leveraging this standardization across all geographic locations, we optimize key data center performance variables, including: space, power, network, personnel, and internal infrastructure.

### Current Pod Distribution

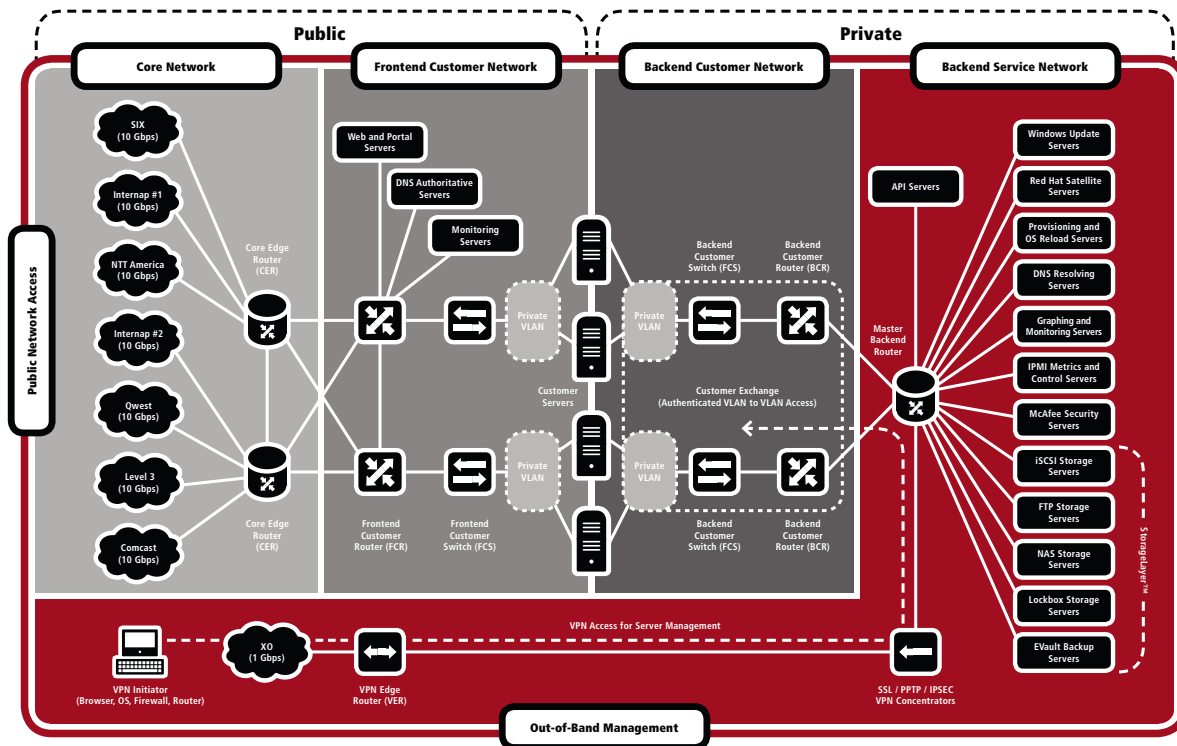
Dallas (Infomart): 5 pods  
Seattle (Sabey): 2 pods  
Washington, D.C. (365 Main): 2 pods

(Total current capacity: 9 Pods, 1,200 racks and 45,000 servers.)



## Seattle Network Overview

The SoftLayer network seamlessly integrates three distinct and redundant network architectures—Public, Private, and Data Center to Data Center—into the industry’s first Network-Within-a-Network topology for maximum accessibility, security, and control. Our network is built from best-in-class networking infrastructure, hardware, and software with exceptional bandwidth and connectivity for the highest speed and reliability.



## Private Network Advantage

SoftLayer’s Private Network provides an unparalleled advantage in security, accessibility, and bandwidth efficiency. It allows administrators to access servers via VPN over carriers that are not connected to our Public Network. This totally segregates public and private traffic, allowing administrators to securely manage their servers and transfer data without sacrificing public bandwidth to their sites. SoftLayer provides unlimited Private Network bandwidth usage.

## Contact SoftLayer

For more information on SoftLayer and any of our products, contact one of our technically trained sales staff by phone, email, or live chat via our site.

Toll-free 1-866-398-7638  
 Local 214-442-0602  
 Email sales@softlayer.com  
 Online www.softlayer.com